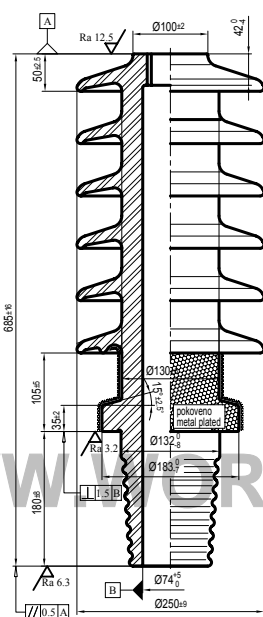
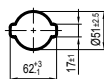
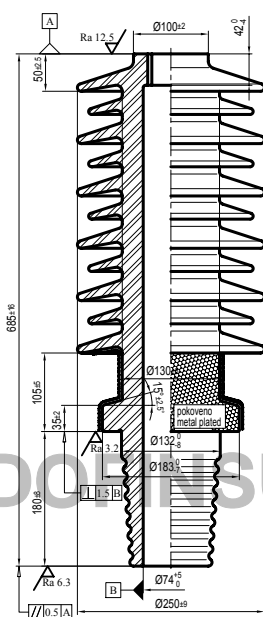
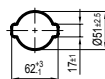


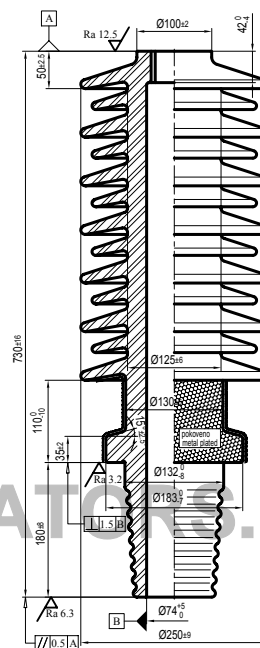
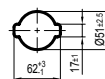
Typ 29



Typ 30



Typ 31



číslo výkresu EPL		5357 32 000 5357 33 000	5360 22 000 5360 23 000	5368 02 000 5368 03 000
typ type		typ 29 52 kV 250A-3150A/P1	typ 30 52 kV 250A-3150A/P3	typ 31 52 kV 250A-3150A/P4
nominální proud nominal strom	A	250-3150	250-3150	250-3150
hmotnost weight	kg	23.5	26.0	30.0
povrch. dráha. creep. distance.	mm	950	1350	1655